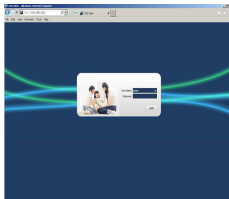


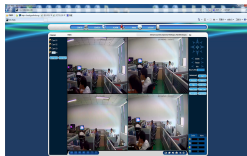
Remote Viewing

WEB Viewing

Network connectivity, the use of PC comes with a browser, IP address, input devices, log DVR equipment for remote monitoring. To be based on first login prompt to install the plug; After a successful connection interface will pop up as shown below.



Enter user name and password, the default administrator username is admin, password 123456. After successful login, the interface shown in Figure 15 below.



P2P Remote Viewing

By [main menu]> [System Settings]> [P2P QRCode] to P2P cloud service settings: [Cloud Service]: Check the open cloud services, the state said when the connection is successful cloud service connection is successful;

[Serial number]: P2P login device ID;

[QRCode]: "ANDROID" is Google Market Download Address, "IOS" is Apple APP store Download Address, "UUID" is the device ID number. "Android Market" is ING Market Download Address;



Mobile / Tablet Software Installation

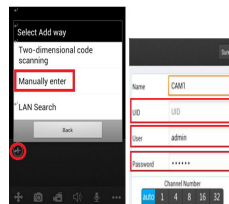
Android tablet or Android phone can scanning "ANDROID" (Android Google Download Address) or "Android Market" (Android market) QRCode in the "P2P QRCode" of the main menu. or Search "N-eye" phone software in Android Market to download and install.

Apple phone or tablet and other Apple IOS devices can scanning "IOS" QRCode in the "P2P QRCode" of the main menu. or Search "N-eye" phone software in Apple APP STORE to download and install.

Mobile / Tablet Remote Viewing

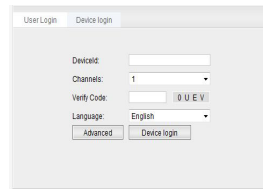
Run "N-eye" software, click on the '+', there are three ways to add the device ID:
 1, select "two-dimensional code scanning" and directly scan the main menu "P2P dimensional code" in the "UUID" two-dimensional code, you can add the device ID;
 2, select "Manual Input", enter the front-end equipment device ID;
 3, put the device in the Internet phone (tablet PC) in the same local area network,

select "LAN search" can also add the device ID. After the device ID added successfully, click "OK", you can view the screen in real-time front-end equipment.



PC Remote Viewing

Login website www.yunys.com, click Management Page.click " Device Login " .



Enter the front-end equipment ID number, select the channel number, enter verification code, click "Device Log" to view screen at real-time front-end equipment.

AHD DVR

Quick User Manual

This series is an excellent digital surveillance equipment designed for the field of security involved. Embedded LINUX operating system, making the system more stable; H.264MP using standard video compression algorithms and a unique spatial and temporal filtering algorithm to achieve a high-quality, low bit-rate synchronous audio monitoring; extremely powerful network services earth enhance the network data transmission capacity and remote control capabilities.

Basic Operation

Login

The device before shipping is preset 3 user : admin, user, and default. "Admin" default password 123456 ; "User " default password is empty.



Password Protection: Password three consecutive errors, the alarm; 5 consecutive errors, account lockout (or 30 minutes after the system reboots, the lock will automatically unlock the account). For safety reasons, please do not hesitate to change the user name and password in the "User Management".

Recording Mode

[Preview] > [Right-Click quick menu] - [Recording Control] , then set login info .

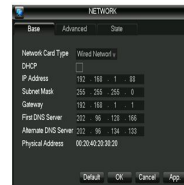


Playback

Play video files on your hard disk. Through the right-click menu [Video Search] to enter the video back to the interface, but also to achieve multi-channel playback.

Internet Setting

By [main menu]> [System Settings]> [Network Configuration] check LAN settings.
[IP address]: factory defaults 192.168.1.88;
[Sub-net Mask]: factory default 255.255.255.0;
[Default Gateway]: factory default 192.168.1.1.



IP address of the device needs to be set to the router in the same network segment, such as the IP address of the router is 192.168.1.1, the subnet mask is 255.255.255.0, then press the default device, usually the default gateway is the router's IP address. In the IE address bar, enter the device IP address (192.168.1.88) can be realized within a local area network access device.

Mode Transferring

By [main menu]> [System Settings]> [Mode switch], mixed mode switch
Note: The mode switching involves rewriting the hard drive, so the set password protection, password is one. Please switch when first installed.
[Mode 1]: Full AHD HD [Mode 2]: AHD HD+analog [Mode 3]: full simulation